

# PERFORMANCE RESULTS

**Kingspan Environmental Ltd.**  
College Rd North, Aston Clinton, Aylesbury, Bucks, GB

**EN 12566-1**  
Part 1: Prefabricated septic tanks  
Results corresponding to EN 12566-1 and S.R. 66

PIA-SR66-1609-1113

## Gamma Septic Tank

Material	Polyethylene
Structural behaviour (pit test)	Pass (for wet ground conditions also)
Watertightness	Pass
Nominal capacity	2 m <sup>3</sup> , 3 m <sup>3</sup> , 4 m <sup>3</sup>
Hydraulic efficiency	99.97 % (twin stage), 99.81 % (single stage)
Durability	Pass

Performance tested by:

**PIA – Prüfinstitut für Abwassertechnik GmbH**  
(PIA GmbH)  
Hergenrather Weg 30  
52074 Aachen, Germany

This document replaces neither the declaration  
of performance nor the CE marking.



Notified Body  
No.: 1739



Certified according to  
ISO 9001:2008

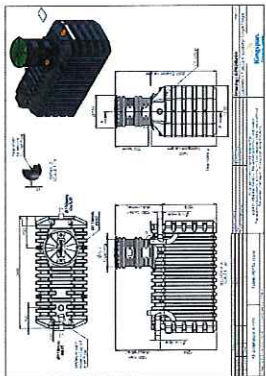
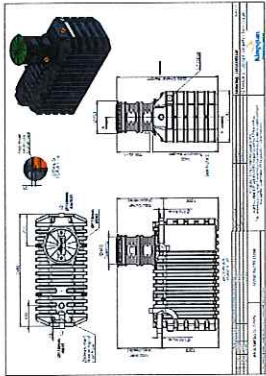
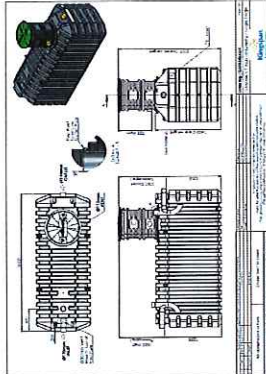


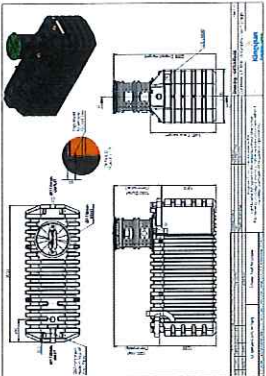
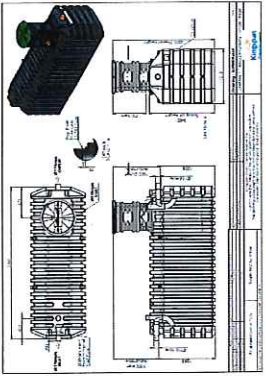
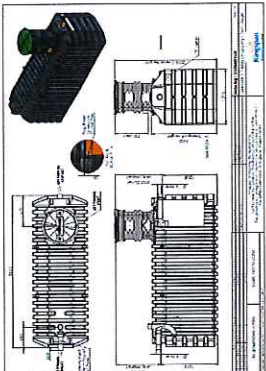
Prüfinstitut für Abwassertechnik GmbH  
*Daniel Verschitz*  
geprüft - tested - testé

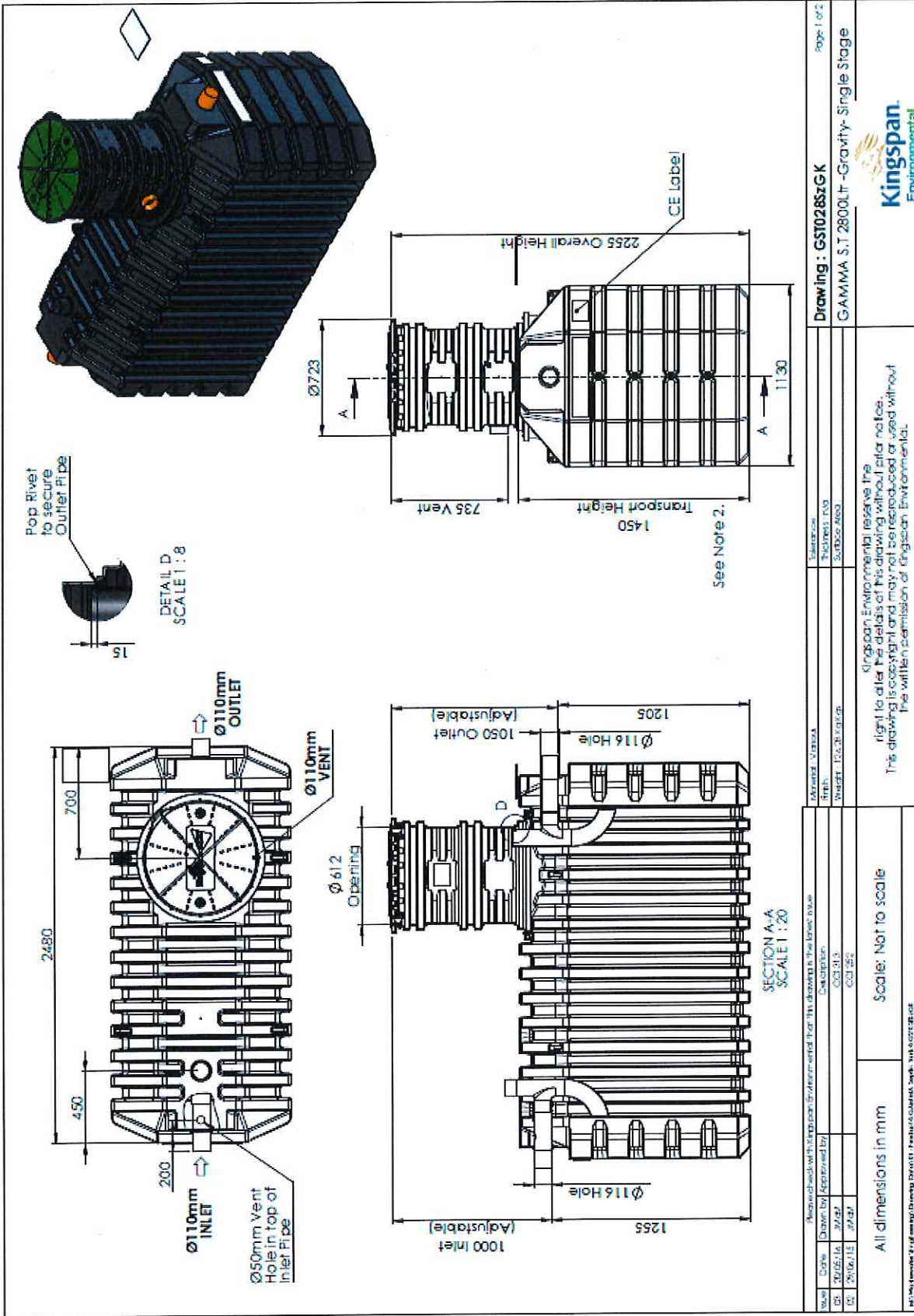
Daniel Verschitz

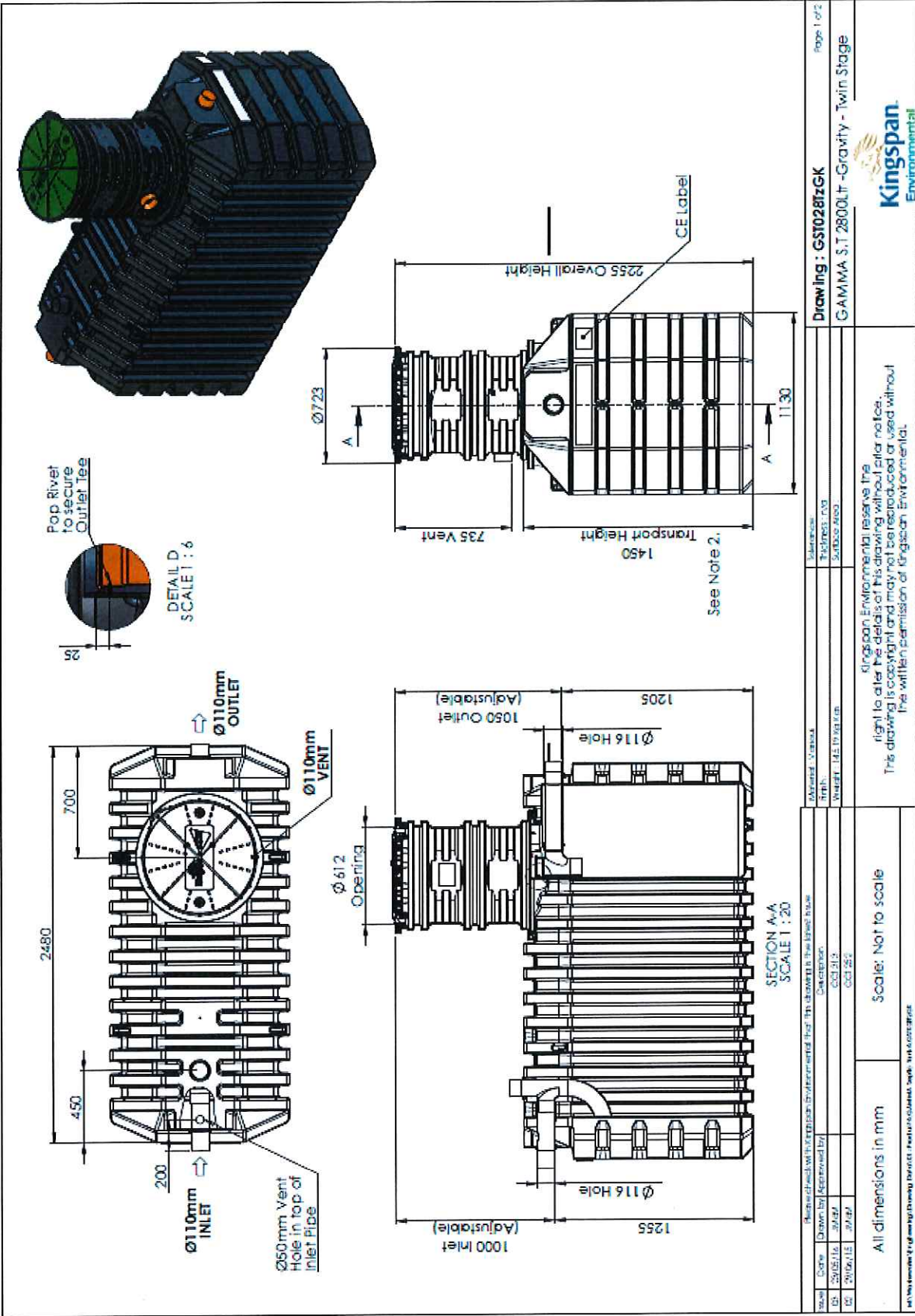
May 2017

Gamma Septic Tank range and its referring test reports:

Nominal capacity Usable volume Population equivalent (PE)	Drawing of model of the range	Watertightness and Nominal Capacity (EN 12566-1 Annex A)	Hydraulic Efficiency (EN 12566-1 Annex B)	Structural Behaviour (EN 12566-1 Annex D)	Durability
2 2,843 l 5		Pass PIA2015-WD/NC-1503-1018.01	Pass PIA2015-HWG-1503-1018.01	Pass For wet ground conditions, 1.00 m installation depth from invert inlet	Pass PIA2015-DH-1503-1018.01
2 2,829 l 5		Pass PIA2015-WD/NC-1503-1018.01	Pass PIA2015-HWG-1503-1018.01	Pass For wet ground conditions, 1.00 m installation depth from invert inlet	Pass PIA2015-DH-1503-1018.01
3 3,561 l 10		Pass PIA2017-WD/NC-1702-1012A.01	Pass Range conformity according to S.R. 66:2015	Pass For wet ground conditions, 1.00 m installation depth from invert inlet	Pass PIA2015-DH-1503-1018.01

Nominal capacity Usable volume Population equivalent (PE)	Drawing of model of the range	Watertightness and Nominal Capacity (EN 12566-1 Annex A)	Hydraulic Efficiency (EN 12566-1 Annex B)	Structural Behaviour (EN 12566-1 Annex D)	Durability
3 3,647 l 11		Pass  PIA2017- WD/NC-1702- 1012A.01	Pass  Range conformity according to S.R. 66:2015	Pass  For wet ground conditions, 1.00 m installation depth from invert inlet	Pass  PIA2015- DH- 1503- 1018.01
4 4,010 l 13		Pass  PIA2015- WD/NC-1503- 1018.01	Pass  Range conformity according to S.R. 66:2015	Pass  PIA2015-ST- PIT-1503- 1018.02  For wet ground conditions, 1.00 m installation depth from invert inlet	Pass  PIA2015- DH- 1503- 1018.01
4 4,010 l 13		Pass  PIA2015- WD/NC-1503- 1018.01	Pass  Range conformity according to S.R. 66:2015	Pass  For wet ground conditions, 1.00 m installation depth from invert inlet	Pass  PIA2015- DH- 1503- 1018.01

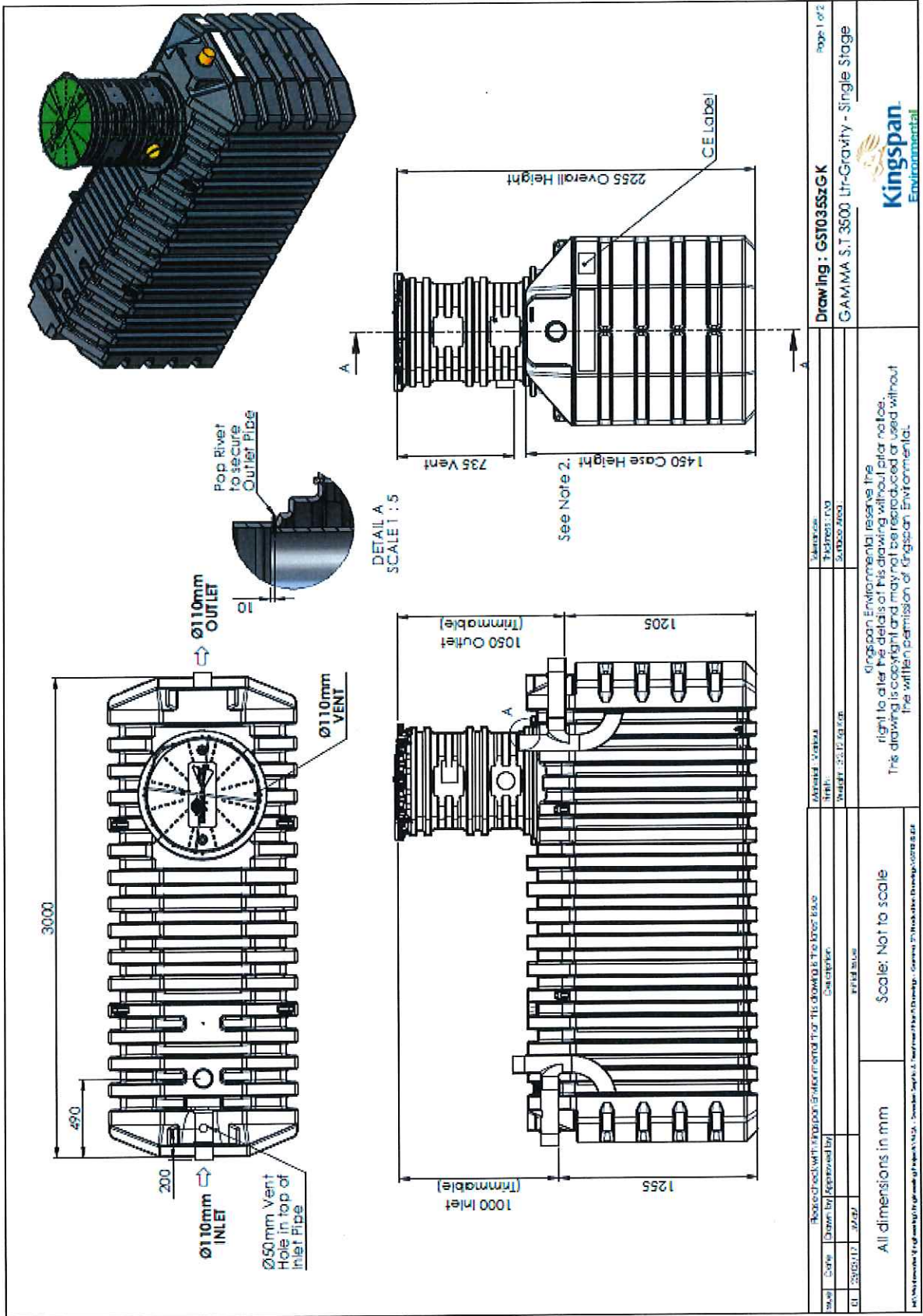




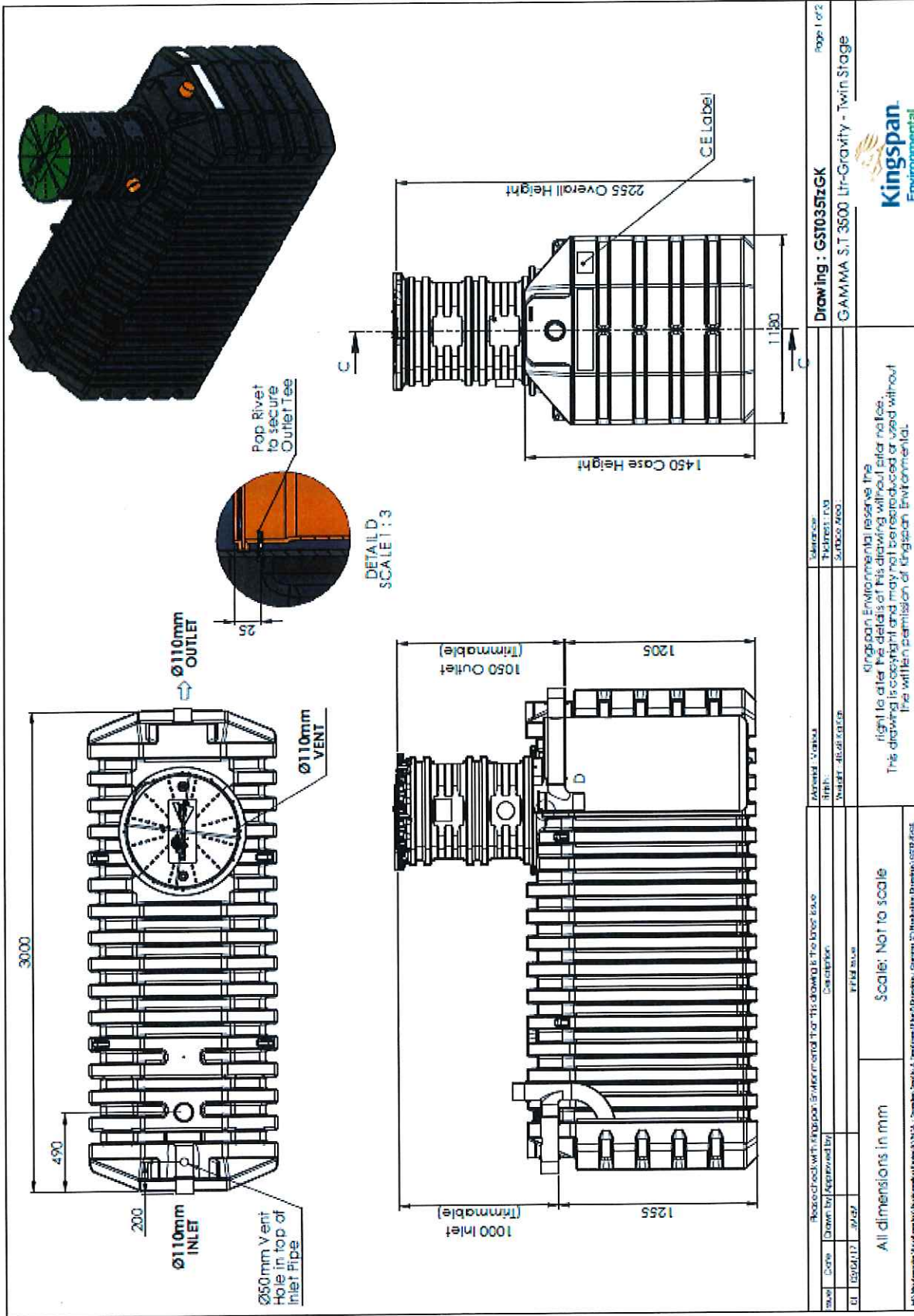
Pop Rivet to secure Outlet Tee

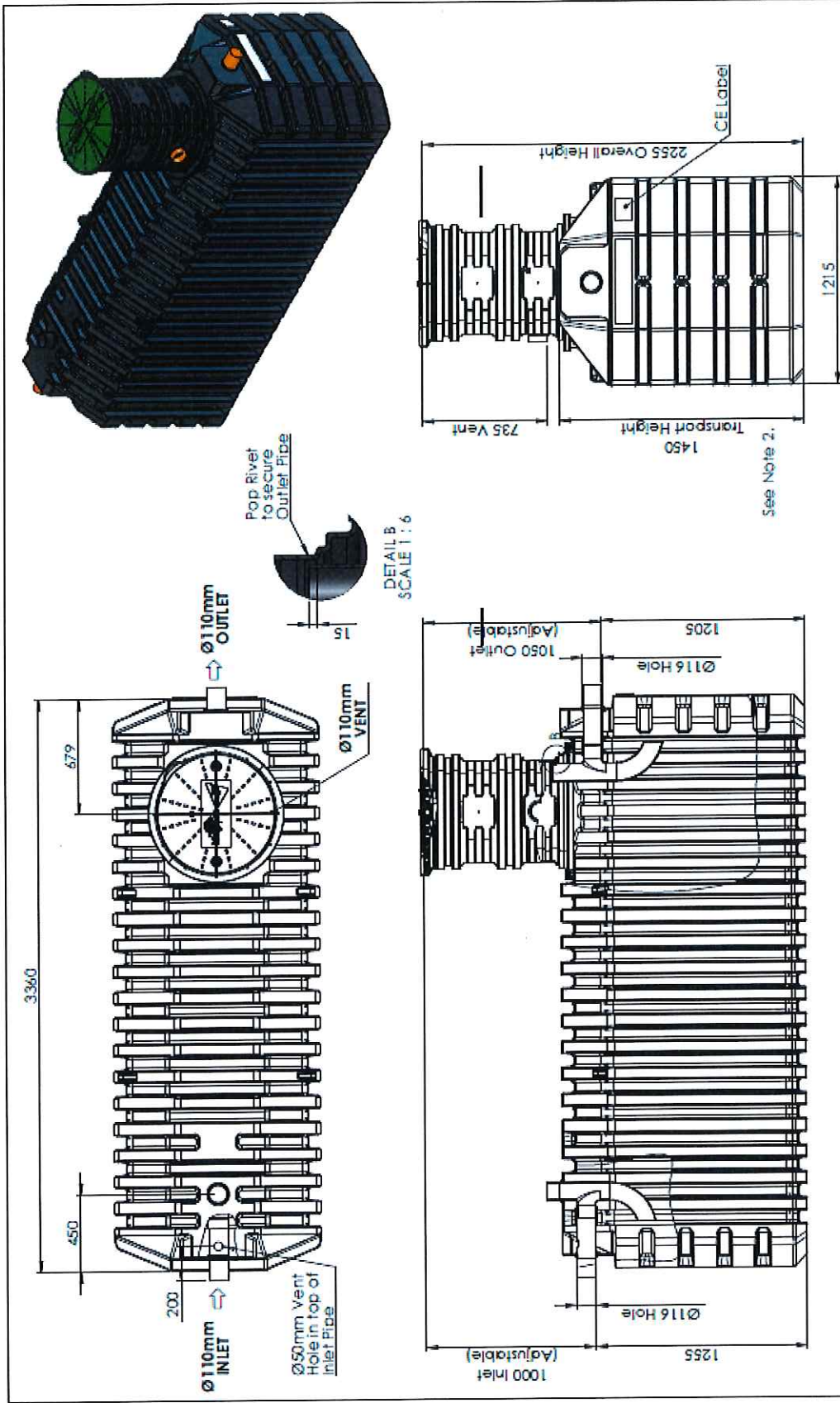
DETAIL D  
SCALE 1 : 6

Drawing : <b>GST0287zGK</b> GAMMA S.T 2800.LT -Gravity - Twin Stage		Page 1 of 2
Name: <b>GAMMA S.T 2800.LT -Gravity - Twin Stage</b> Code: <b>0287zGK</b> Date: <b>2016/11/15</b> Drawn by: <b>J.P.P.</b> Checked by: <b>J.P.P.</b>	Approved: <b>Stavros</b> Date: <b>2016/11/15</b> Checked by: <b>J.P.P.</b>	Scale: <b>Not to scale</b> All dimensions in mm
Kingspan Environmental reserve the right to alter the details of this drawing without prior notice. This drawing is copyright and may not be reproduced or used without the written permission of Kingspan Environmental.		



Revision	Author	Checked	Drawn	Scale	Project
<b>Drawing: GS1035szGK</b> <b>GAMMA S.T. 3500 Ltr-Gravity - Single Stage</b>					
Kingspan Environmental reserves the right to alter the details of this drawing without prior notice. This drawing is copyright and may not be reproduced or used without the written permission of Kingspan Environmental.					
All dimensions in mm Scale: Not to scale			Project Name:		
<small>PIA Profinstitut für Abwassertechnik GmbH, D-30659 Hannover, Germany, Tel. +49 51 30701-0, Fax +49 51 30701-200, E-Mail: info@pia.de, www.pia.de</small>					





Scale	Code	Drawn By	Approved By	Checked	Material	Unit	Weight	Vol. (Litres)
	2006/11	JWP	JWP	GD/SL	Galvanized Steel	mm	16.4	20.0
<p>All dimensions in mm</p> <p>Scale: Not to scale</p>								
<p>Approved by Kingspan Environmental Ltd. The drawing is the property of Kingspan Environmental Ltd. It is not to be reproduced or used without the written permission of Kingspan Environmental.</p>								
<p>Kingspan Environmental reserves the right to alter the details of this drawing without prior notice. This drawing is copyright and may not be reproduced or used without the written permission of Kingspan Environmental.</p>								
<p>Drawn by: Kingspan Environmental Ltd. Unit: Kingspan Environmental Ltd. Weight: 16.4 kg. Volume: 20.0 litres.</p>								
<p>Drawing: GS1040S-GK</p> <p>GAMMA S.T. 4000 LT-Gravity - Single Stage</p>								
								Page 1 of 2





